



## Examples of Tweets surrounding the release of TRIP's 2019 [Rural Connections: Challenges and Opportunities in America's Heartland](#)



The Sacramento Bee

@sacbee\_news

Official account of The Sacramento Bee in California. News, sports, entertainment, politics.

Sacramento, CA [sacbee.com](http://sacbee.com) Joined April 2008


193 Following 215.2K Followers

Following



**The Sacramento Bee** @sacbee\_news · May 23

Drivers across the country are more likely to die on rural roads than city streets — but in these states, rural crash deaths are even more common than the national average, a new study finds.



Deadliest rural roads are in SC, California and these 23 other states, study ... SC and California's rural, non-interstate roads have the highest death rates across the US, a transportation nonprofit's new study finds. Those states and [sacbee.com](http://sacbee.com)



Following

### Pittsburgh Post-Gazette

@PittsburghPG

The Pittsburgh Post-Gazette, serving Western Pa. for over 200 years.

[facebook.com/pittsburghpost...](https://facebook.com/pittsburghpost...) / [instagram.com/pittsburghpg/](https://instagram.com/pittsburghpg/)

Pittsburgh, Pa. [post-gazette.com](https://post-gazette.com) Joined February 2009

649 Following 162.8K Followers



### Pittsburgh Post-Gazette @PittsburghPG · 10h



Pennsylvania gets poor marks for rural road, bridge conditions



Pennsylvania gets poor marks for rural road, bridge conditions

The study "Rural Connections: Challenges and Opportunities in America's Heartland" ranks rural road and bridge conditions in all 50 states.

[post-gazette.com](https://post-gazette.com)



3

1



**FRONT PAGE**



Follow

**GoErie**

@GoErie

Updates from [GoErie.com](https://goerie.com) and the Erie Times-News

📍 Erie, Pa. [goerie.com](https://goerie.com) 📅 Joined March 2008

312 Following 39.2K Followers



**GoErie** @GoErie · May 29

Our view: Pa. roads need lasting fix

**EDITORIAL: PA ROADS NEED LASTING FIX**



Our view: Pa. roads need lasting fix

Something as elemental as deploying tax dollars to maintain the roads and bridges that make our lives and [goerie.com](https://goerie.com)



1



**GoErie** @GoErie · May 27

Emergency repairs trump state's rural road spending



Emergency repairs trump state's rural road spending

41 percent of rural roads and bridges are rated poor/mediocre, but flood/slide-damaged infrastructure [goerie.com](https://goerie.com)







Following

**Local 4 WDIV Detroit** ✓

@Local4News Follows you

Covering the latest news in the Metro Detroit area and beyond. Tweets managed by @KenHaddad & @ClickOnDetroit. News tip? News@wdiv.com

📍 Detroit, MI 🔗 [clickondetroit.com](http://clickondetroit.com) 📅 Joined March 2009

2,163 Following 401.6K Followers



**Local 4 WDIV Detroit** ✓ @Local4News · 4h

Report finds Michigan's rural roads, bridges have 'significant deficiencies'



Report finds Michigan's rural roads, bridges have 'significant deficiencies'  
A new report finds Michigan's rural roads and bridges are in need of serious repairs.

🔗 [clickondetroit.com](http://clickondetroit.com)



Following

**KATU News** ✓

@KATUNews

The latest news & information from Portland, Oregon & SW Washington. Livestream: [katu.com/watch](http://katu.com/watch)

📍 Portland, Oregon 🔗 [katu.com](http://katu.com) 📅 Joined December 2008

1,075 Following 197.8K Followers



**KATU News** ✓ @KATUNews · May 22

New report highlights alarming stats for Oregon traffic fatalities on rural roads [bit.ly/2Qks9Sm](http://bit.ly/2Qks9Sm)







**13 On Your Side** ✓

@wzzm13

We stand up for the community. We want to make life better for everyone. We celebrate all that makes West Michigan unique. We are 13 On Your Side.

📍 Grand Rapids, Michigan 🔗 [13onourside.com](http://13onourside.com) 🕒 Born November 1  
📅 Joined August 2008

**313** Following   **87.2K** Followers



**13 On Your Side** ✓ @wzzm13 · May 22

TRIP: Rural roads, bridges are in need of serious repairs



TRIP: Rural roads, bridges are in need of serious repairs  
The transportation research group has ranked the rural roads of the U.S. by state, see where Michigan stacks up  
[wzzm13.com](http://wzzm13.com)

💬 1   ↻ 1   ❤️ 2   📤



Following

## ABQ Business First

@ABQBizFirst

This is the Twitter account for Albuquerque Business First in Albuquerque, New Mexico. The region's #1 source for business news

📍 Albuquerque, New Mexico [🌐 AlbuquerqueBusinessFirst.com](https://www.albuquerquebusinessfirst.com)

📅 Joined March 2009

1,897 Following 15.3K Followers



**ABQ Business First** @ABQBizFirst · May 24

Nearly \$400 million has been allotted to repair roads and bridges, do construction and manage other surface projects across New Mexico.



NM's rural roads are even worse than you might think, report says  
Nearly \$400 million has been allotted to repair roads and bridges, do construction and manage other surface projects across New Mexico.  
[🌐 bizjournals.com](https://bizjournals.com)





Following

**Jason Puhr**

@JasonWWMT

Weekend Morning Anchor @wwmtnews @BSUCCIM @BallStateFB Husband. Father. Disc Golfer.

Kalamazoo, MI [wwmt.com](http://wwmt.com) Joined May 2015

149 Following 621 Followers



**Jason Puhr** @JasonWWMT · 3h

NEW study gives Michigan roads and bridges a 🗨️ saying conditions contribute to safety. I'll break down the trouble spots this morning on @wwmtnews at 6 a.m. and 6:52.



2







Follow

**American Farm Bureau** ✓

@FarmBureau

America's largest general farm organization, comprised of and directed by farm and ranch families who engage in all types of food, fuel and fiber production.

📍 Washington, DC [fb.org](https://fb.org) 📅 Joined February 2009

1,535 Following 70.4K Followers



**American Farm Bureau** ✓ @FarmBureau · 17m

According to [@TRIP\\_Inc](#) 15% of roads in rural America are in "poor condition."  
[bit.ly/2Hw9CzJ](https://bit.ly/2Hw9CzJ)

"Farmers and ranchers depend on rural roads, highways and bridges for daily life and to move their products to market."—[@ZippyDuvall](#)





Following

**AAA**

@AAASafety Follows you

As North America's largest motoring and leisure travel organization, AAA serves more than 59 million members. DISCLAIMER: [bit.ly/1xDRY2k](http://bit.ly/1xDRY2k)

USA [AAA.com](http://AAA.com) Joined June 2009

2,518 Following 18.2K Followers

AAA Retweeted



**TRIP** @TRIP\_Inc · May 22

Traffic fatalities on (non-Interstate) rural roads nearly two and a half times higher than all other roads according to [@TRIP\\_Inc ow.ly/XEAm30oMwXw](https://ow.ly/XEAm30oMwXw)  
#RuralRoads #InfrastructureNow #rebuildrural @ChamberMoves @FarmBureau @AAAnews

## TOP 25 STATES WITH THE HIGHEST RURAL ROAD FATALITY RATE (NON-INTERSTATE)



Reply 6 Retweet 4 Share



### ChamberMoves

@ChamberMoves Follows you

We are the transportation Infrastructure team of the U.S. Chamber of Commerce. Ed Mortimer serves as Vice President of Transportation Infrastructure.

Washington, DC [uschamber.com/lets-rebuild-a...](https://uschamber.com/lets-rebuild-a...) Joined February 2016

764 Following 1,273 Followers



**ChamberMoves** @ChamberMoves · 33m

This is unacceptable and another critical reason @realDonaldTrump and Congress must come together to modernize America's infrastructure! #InfrastructureNow #BuildForTomorrow @USChamber @ReBuildUSANow

**TRIP** @TRIP\_Inc · 42m

Traffic fatalities on (non-Interstate) rural roads nearly two and a half times higher than all other roads according to @TRIP\_Inc [ow.ly/XEAm30oMwXw](https://ow.ly/XEAm30oMwXw) #RuralRoads #InfrastructureNow #rebuildrural @ChamberMoves @FarmBureau @AAAnews

## TOP 25 STATES WITH THE HIGHEST RURAL ROAD FATALITY RATE (NON-INTERSTATE)







**I Make America** ✓

@IMakeAmerica Follows you

Nothing gets done in DC without making some noise... join our movement in support of U.S. manufacturing! A project of the Association of Equipment Manufacturers

[IMakeAmerica.org](http://IMakeAmerica.org) 📅 Joined July 2010

1,767 Following 7,739 Followers



**I Make America** ✓  
@IMakeAmerica



Today, [@TRIP\\_Inc](#) released a report that studied the condition of America's rural roads. 15 percent of [#RuralRoads](#) are rated in poor condition. We need [#InfrastructureNow](#) to fix these and other deteriorating roads across the U.S. [tripnet.org/docs/Rural\\_Roa...](http://tripnet.org/docs/Rural_Roa...)

11:03 AM · May 22, 2019 · [TweetDeck](#)



Advancing Roadway Safety



Following

**ATSSA**

@ATSSAHQ Follows you

Advancing roadway safety with members through the design, manufacture, and installation of road safety devices.

Fredericksburg, Va. atssa.com Joined July 2009

1,449 Following 2,619 Followers

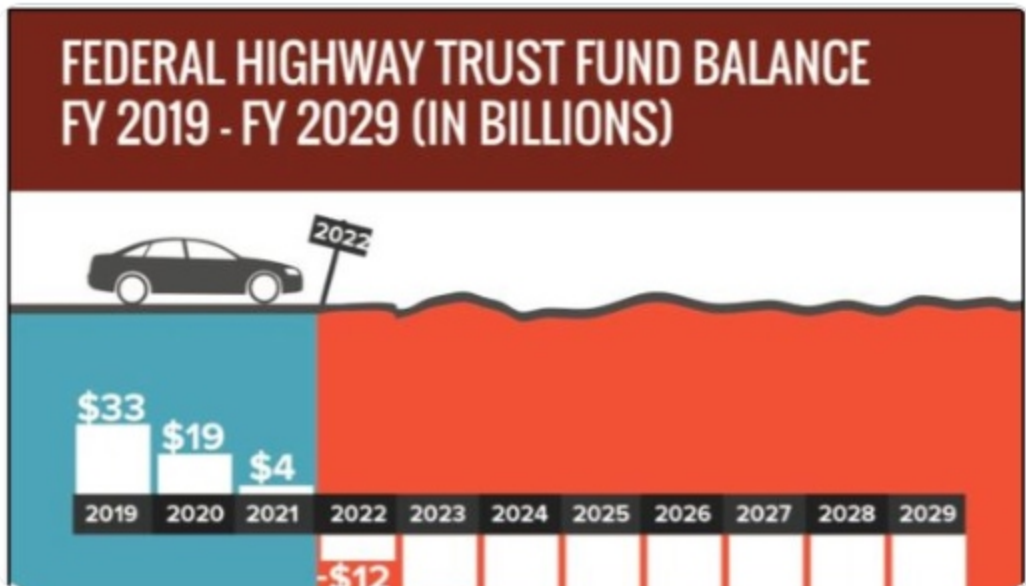


ATSSA @ATSSAHQ · 10m

.@TRIP\_Inc's latest report found that fifteen percent of U.S. rural roads are rated in poor condition - impacting safety of motorists.

We know investing in #roadwaysafety #infrastructure on rural roadways saves lives.

Read more @ bit.ly/2WYQAah. #SaferRoadsSaveLives



You and Federal Highway Admn



# BUILD A VISION FOR KANSAS TRANSPORTATION



## Economic Lifelines

@EconLifelinesKS Follows you

Stimulating the economic vitality of Kansas through leadership in infrastructure development. Join us! [economiclifelines.com](http://economiclifelines.com)

Joined April 2012

708 Following 543 Followers



Economic Lifelines @EconLifelinesKS · 2m

#RuralRoads #InfrastructureNow @TRIP\_Inc



Economic Lifelines @EconLifelinesKS · 2m

@TRIP\_Inc, a national transportation research nonprofit, released a report detailing conditions & safety metrics of rural roads. KS has one of the higher fatality rates in the US, underscoring needs for aggressive funding of transportation infrastructure. [tripnet.org](http://tripnet.org)

The rate of traffic fatalities on Kansas' non-interstate, rural roads is the sixth highest in the nation and is nearly three times higher than the fatality rate on all other roads in the state - 2.87 fatalities per 100 million vehicle miles of travel vs. 0.95. The report finds that 35 percent of Kansas' rural roads are rated in poor or mediocre condition. Six percent of Kansas' rural bridges are rated as poor/structurally deficient. Bridges that are poor/structurally deficient have significant deterioration to the major components of the bridge and are often posted for lower weight or closed to traffic, restricting or reducing (or even prohibiting) agricultural equipment, commercial trucks, school buses and emergency services vehicles.

"The benefits of transportation infrastructure investment are well known when it comes to enhancing economic development, creating jobs, and attracting business to Kansas," said Economic Lifelines Executive Director Scott Rescher. "This TRIP report is a welcome reminder that these investments also play a crucial role in the safety of Kansas citizens. Kansas has an excellent opportunity to improve our performance in these safety measures as we pursue a sustainable and aggressive funding package for transportation in the 2020 legislative session."

America's rural transportation system provides the first and last link in the supply chain from farm to market, connects manufacturers to their customers, supports the tourism industry, and enables the production of energy, food and fiber. Rural Americans are more reliant on the quality of their transportation system than their urban counterparts.

"An adequately sized and well-maintained surface transportation system is critical for moving goods and people safely throughout Kansas," said Matt Allen, city manager of Garden City. "In southwest Kansas, we are fortunate to be experiencing a period of economic growth. However, if the movement of products and workers is compromised, our economic and personal health will be lost."

"Rural roads play a critical role in supporting the transportation needs of millions of Americans every day," said Kathleen Bowen, AAA senior vice president of public affairs and international relations. "Damaged and deteriorating roadways too often result in deadly crashes, and it is time to act. Making critical safety improvements to rural roads will save thousands of lives each year and help move our economy forward."

The TRIP report finds that the U.S. needs to implement transportation improvements that will improve rural transportation connectivity, safety and conditions to provide the nation's small communities and rural areas with safe and efficient access to support quality of life and enhance economic productivity. "Farmers and ranchers depend on rural roads, highways and bridges for daily life and to move their products to market," said Zippy Dowell, president of the American Farm Bureau Federation. "Securing the appropriate resources at the local, state and federal levels will allow for the improvements needed to provide a rural transportation system that will keep goods moving, American agriculture competitive and rural Americans safe."

"The health of the nation's economy and the safety and quality of life in America's small communities and rural areas ride on our rural transportation system. Our rural roads and bridges provide crucial links from farm to market, move manufactured and energy products, and provide access to countless tourism, social and recreational destinations," said Bob Wilkins, executive director of TRIP. "Using the federal Highway Trust Fund with a long-term, sustainable source of revenue that supports the transportation investment needed will be crucial to the modernization of our rural transportation system."



FOR IMMEDIATE RELEASE  
Wednesday, May 23, 2018  
Report available at: [tripnet.org](http://tripnet.org)

Contact: [Rocky Moore](mailto:Rocky.Moore@tripnet.org) (202) 262-0734  
[Carlynn Bonita](mailto:Carlynn.Bonita@tripnet.org) (202) 466-6706  
TRIP office (202) 466-6706

### KANSAS' RURAL ROADS HAVE ONE OF HIGHEST FATALITY RATES IN THE NATION; REPAIRS & MODERNIZATION NEEDED TO BOOST SAFETY, IMPROVE CONDITIONS & SUPPORT GROWTH & CONNECTIVITY

As the report contains data for all 50 states for the percentage of rural roads in poor condition, the percent of deficient rural bridges, road weight limits and the number of rural miles, visit [tripnet.org](http://tripnet.org) for more details.

Washington, D.C. — America's rural transportation system is in need of repairs and modernization to support economic growth in the nation's heartland, which is a critical source of energy, food and fiber. With increases in population and growing employment, rural America is heavily reliant on the quality of its transportation system to sustain further growth. This is according to a new report released today by TRIP, a national transportation research nonprofit. The report, ["Rural Roads, Bridges and Safety in America's Heartland"](http://tripnet.org/conditions-bridges-and-safety-in-america), evaluates the safety and condition of the nation's rural roads and bridges and finds that the nation's rural transportation system is in need of immediate improvements to address deficient roads and bridges, high crash rates, and inadequate connectivity and capacity. The chart below shows the states with the highest rate of rural pavements in poor condition, states with the highest share of rural bridges that are rated poor/structurally deficient, and states with the highest fatality rates on non-interstate, rural roads.

RANK	STATE	Rural Pavements in Poor Condition	STATE	Rural Bridges Poor/Structurally Deficient	STATE	Fatality Rate per 100M VMT on Rural Non-Interstate Roads	Fatality Rate per 100M VMT on All Other Roads
1	Montana	85%	Monte Carlo	25%	South Carolina	2.69	0.98
2	Alabama	82%	Idaho	23%	California	2.59	0.97
3	New Mexico	80%	West Virginia	20%	Arizona	2.54	1.03
4	West Virginia	80%	Pennsylvania	18%	Mississippi	2.37	0.92
5	Illinois	80%	North Dakota	18%	North Dakota	2.35	0.92
6	Michigan	80%	Wisconsin	17%	Tennessee	2.35	0.93
7	Minnesota	77%	Utah	17%	Kentucky	2.34	1.00
8	Indiana	74%	New York	16%	Minnesota	2.28	1.01
9	Ohio	73%	North Carolina	15%	Ohio	2.27	0.98
10	New Hampshire	72%	Colorado	14%	Oregon	2.24	0.98
11	Washington	70%	Michigan	14%	North Carolina	2.23	0.99
12	Connecticut	69%	South Dakota	13%	Missouri	2.20	0.97
13	Wisconsin	67%	Nebraska	12%	Alabama	2.19	0.97
14	Tennessee	66%	Arkansas	11%	Georgia	2.18	1.00
15	Arkansas	66%	Delaware	9%	Virginia	2.14	0.97
16	Mississippi	66%	Alabama	8%	Indiana	2.13	0.99
17	Ohio	66%	New Hampshire	8%	Indiana	2.12	0.98
18	Massachusetts	67%	Massachusetts	8%	Ohio	2.11	0.98



EMPLOYMENT  
HOUSING  
COMMERCE  
ECONOMIC DEVELOPMENT  
TOURISM  
CULTURE  
RECREATION



ROADS & BRIDGES  
**CONNECT**  
EVERYONE TO  
EVERYTHING



ENTERTAINMENT  
RECREATION  
PUBLIC SAFETY  
HEALTHCARE  
OPPORTUNITY  
QUALITY OF LIFE



Following

## Fix SC Roads

@scroads Follows you

We are a non-profit organization that believes an efficient and safe highway system is essential to SC's economic growth and development.

📍 South Carolina 🔗 [scfor.org](http://scfor.org) 📅 Joined April 2014

645 Following 860 Followers



Fix SC Roads

@scroads

Why did the 2017 road funding bill specifically require investments in [#ruralroads](#) safety? HERE'S WHY: New [@TRIP\\_Inc](#) Report released today ranks SC #1 in rural road fatalities based on 2017 data. [scfor.org/2019/05/22/new...](http://scfor.org/2019/05/22/new...) [@SCHouseGOP](#) [@SCHouseDems](#) [@scsenategop](#) [@SCSenateDems](#)



New Report Ranks SC #1 in Rural Road Fatalities - [scfor.org](http://scfor.org)  
SOUTH CAROLINA'S RURAL ROADS HAVE HIGHEST TRAFFIC FATALITY RATE IN THE NATION; REPAIRS & MODERNIZATION  
[scfor.org](http://scfor.org)

9:20 AM · May 22, 2019 · [Twitter Web Client](#)



Rock Products@rockproducts

1h

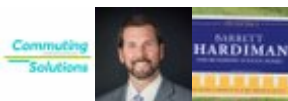
TRIP: America's Rural Roads Need Critical Repairs

(link: <http://ow.ly/L0Ut50uo3Hh>)

[ow.ly/L0Ut50uo3Hh](http://ow.ly/L0Ut50uo3Hh)

@TRIP\_Inc

#RebuildRural #InfrastructureNow



[Claudio Fonseca](#) liked a Tweet you were mentioned in

TRIP Report Finds 15% Rural Roadways Need Immediate Attention: (link:

<https://buff.ly/2WTVcOZ>) [buff.ly/2WTVcOZ](https://buff.ly/2WTVcOZ)

@TRIP\_Inc (link:

<https://twitter.com/AsphaltContractor/status/1131298440372203522/photo/1>)

[pic.twitter.com/dM8Il6B2H9](https://twitter.com/dM8Il6B2H9)



[ACPA](#) Retweeted your Tweet Report: Rural roads in Carolinas among the deadliest in US (link:

<https://on.wsocv.com/2M4jBQM>)

[on.wsocv.com/2M4jBQM](https://on.wsocv.com/2M4jBQM) via @wsocv

@TRIP\_Inc #RuralRoads #InfrastructureNow

#rebuildrural @ChamberMoves @FarmBureau

@AAANews



[NE Grain & Feed](#) Retweeted a Tweet you were mentioned in America's rural bridges are

crumbling, meaning they can be closed to heavy machinery + larger vehicles like ag equipment, commercial trucks, + even school buses.

#InfrastructureNow can fix those bridges to keep

Americans moving. #RuralRoads @TRIP\_Inc (link:

[http://www.tripnet.org/docs/Rural\\_Roads\\_TRIP\\_Report\\_May\\_2019.pdf](http://www.tripnet.org/docs/Rural_Roads_TRIP_Report_May_2019.pdf)) [tripnet.org/docs/Rural\\_Roa...](http://www.tripnet.org/docs/Rural_Roads_TRIP_Report_May_2019.pdf)

(link:

<https://twitter.com/IMakeAmerica/status/11312656>

33675554818/photo/1)  
[pic.twitter.com/ITJAYeNC7a](https://pic.twitter.com/ITJAYeNC7a)



[John D. Boyd](#) and [ASCE Gov't Relations](#)

liked your Tweet

Mississippi's Rural Roads and Bridges are in Need of Improvement (link:

<https://www.wxxv25.com/2019/05/22/mississippi-rural-roads-bridges-need-improvement/>)

[wxxv25.com/2019/05/22/mis...](https://www.wxxv25.com/2019/05/22/mis...) via @WXXV25

@TRIP\_Inc #RuralRoads #InfrastructureNow

#rebuildrural



[AAA Blue Grass News](#)

@AAABGNews 6h

Kentucky's rural roads have one of the highest traffic fatality rates in the nation. Repairs and modernation are needed to boost safety, improve condition and support growth & connectivity.

@TRIP\_Inc

#KYinfrastructure #ruralroads

Quote Tweet



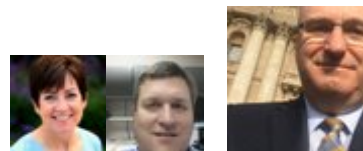
TRIP @TRIP\_Inc · May 22 Fifteen percent of America's rural roads are rated in poor condition

according to new @TRIP\_Inc report (link:

<http://ow.ly/tRrY30oMx2S>) [ow.ly/tRrY30oMx2S](http://ow.ly/tRrY30oMx2S)

#RuralRoads #InfrastructureNow #rebuildrural

@ChamberMoves @FarmBureau @AAANews



[Tracy Zeorian](#) and [Matthias Ristow Leif Magnusson](#)

@LjMagnusson Now is the time for the federal

government to do its part to modernize US Infrastructure! NEWS RELEASE: NEBRASKA'S RURAL BRIDGES AMONG MOST REPAIRS & MODERNIZATION NEEDED TO IMPROVE CONDITIONS, BOOST SAFETY & SUPPORT GROWTH & CONNECTIVITY (link:

[http://www.tripnet.org/docs/Rural\\_Roads\\_NE\\_TRIP\\_Release\\_05-22-2019.php](http://www.tripnet.org/docs/Rural_Roads_NE_TRIP_Release_05-22-2019.php))

tripnet.org/docs/Rural\_Roa... via @TRIP\_Inc  
NOW!#InfrastructureNow #BuildForTomorrow  
@USChamber @ReBuildUSANow (link:  
<https://twitter.com/uschamber/status/1131311301593059328>) twitter.com/uschamber/stat...



[al meadors](#) Retweeted a Tweet you were mentioned in  
Rural roads and bridges are in dire need of rehabilitation and reconstruction, according to a report by .@TRIP\_Inc. Now is the time for Congress and the Administration to stand together in support of #infrastructure investment. (link: <https://twitter.com/PaveConcrete/status/1131295549729062912/photo/1>)  
[pic.twitter.com/rO6jHONpHO](http://pic.twitter.com/rO6jHONpHO)



[Ag Data Transparent](#) liked a Tweet you were mentioned in According to @TRIP\_Inc 15% of roads in rural America are in "poor condition." (link: <http://bit.ly/2Hw9CzJ>) bit.ly/2Hw9CzJ  
"Farmers and ranchers depend on rural roads, highways and bridges for daily life and to move their products to market."—@ZippyDuvall



[ACPA](#) liked your Tweet Freight mobility and efficiency fundamental to rural economic vitality and prosperity @TRIP\_Inc (link: <http://ow.ly/XEAm30oMwXw>)  
[ow.ly/XEAm30oMwXw](http://ow.ly/XEAm30oMwXw) #RuralRoads  
#InfrastructureNow #rebuildrural @ChamberMoves @FarmBureau @AAAnews



ACPA@PaveConcrete Rural roads and bridges are in dire need of rehabilitation and reconstruction, according to a report by [@TRIP\\_Inc](#). Now is the time for Congress and the Administration to stand together in support of [#infrastructure](#) investment.



CalAPA @CalAPAnews [May 22](#) CA is No. 2 on the [@TRIP\\_Inc](#) "worst" rural roads list; No. 20 on the poor/deficient rural bridge list. SB1 [@fixcaroads](#) state dollars can only do so much. Federal dollars are particularly important in rural areas. Tell your member of Congress to act now: (link: <https://www.dontletamericadeadend.us/>)  
[dontletamericadeadend.us](https://www.dontletamericadeadend.us/)

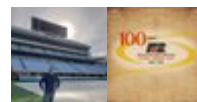
Quote Tweet



TRIP @TRIP\_Inc · May 22 @TRIP\_Inc report: America's rural economy depends on a reliable and efficient surface transportation system (link: <http://ow.ly/tRrY30oMx2S>)  
[ow.ly/tRrY30oMx2S](http://ow.ly/tRrY30oMx2S) #RuralRoads  
#InfrastructureNow #rebuildrural @ChamberMoves @FarmBureau @AAAnews



[Wayne Tomlinson](#) Retweeted a Tweet you were mentioned in  
Today, @TRIP\_Inc released a report that studied the condition of America's rural roads. 15 percent of #RuralRoads are rated in poor condition. We need #InfrastructureNow to fix these and other deteriorating roads across the U.S. (link: [http://www.tripnet.org/docs/Rural\\_Roads\\_TRIP\\_Report\\_May\\_2019.pdf](http://www.tripnet.org/docs/Rural_Roads_TRIP_Report_May_2019.pdf)) tripnet.org/docs/Rural\_Roa...



[Richard Gupton](#) and [MN Farm Bureau](#) Retweeted a Tweet you were mentioned in

Only 47% of America's rural roads are in "good condition" @TRIP\_Inc new report says. (link: <https://twitter.com/FarmBureau/status/1131192164027949056>) twitter.com/FarmBureau/sta...







[StephanieChristensen](#) Retweeted your Tweet

TRIP: Rural roads, bridges are in need of serious repairs (link:

<http://www.wzzm13.com/article/traffic/trip-rural-roads-bridges-are-in-need-of-serious-repairs/69-b2656688-8698-4e96-98db-4ae7e4ba3275>)  
wzzm13.com/article/traffi... via @wzzm13  
#RuralRoads #InfrastructureNow #rebuildrural @ChamberMoves @FarmBureau @AAANews



[Max Kuney](#) and 3

others Retweeted your Tweet  
America's rural roads have significant deficiencies according to new @TRIP\_Inc report (link: <http://ow.ly/XEAm30oMwXw>)  
ow.ly/XEAm30oMwXw #RuralRoads #InfrastructureNow #rebuildrural @ChamberMoves @FarmBureau @AAANews (link: [https://twitter.com/TRIP\\_Inc/status/1131062239920836608/photo/1](https://twitter.com/TRIP_Inc/status/1131062239920836608/photo/1)) pic.twitter.com/jxd7I0RRca



Brian Deery @BPDeery [May 22](#) It's

time to invest in America's transportation infrastructure.  
Quote Tweet TRIP @TRIP\_Inc  
America's rural roads have significant deficiencies according to new @TRIP\_Inc report (link: <http://ow.ly/XEAm30oMwXw>)  
ow.ly/XEAm30oMwXw #RuralRoads #InfrastructureNow #rebuildrural @ChamberMoves @FarmBureau @AAANews



[jelle lucy](#) and 3

others liked a Tweet you were mentioned in  
Only 47% of America's rural roads are in "good condition" @TRIP\_Inc new report says. (link: <https://twitter.com/FarmBureau/status/1131192164027949056>) twitter.com/FarmBureau/sta...



arm Bureau Fede Utah  
Farm Bureau  
@UtahFarmBureau  
[May 22](#) #Utah has one of the highest number of rural roads that have significant deficiencies in the United States.

[#rebuildrural](#) [#ruralroads](#) [#utahfarmlife](#)  
Quote Tweet TRIP @TRIP\_Inc · May 22  
America's rural roads have significant deficiencies according to new @TRIP\_Inc report (link: <http://ow.ly/XEAm30oMwXw>)  
ow.ly/XEAm30oMwXw #RuralRoads #InfrastructureNow #rebuildrural @ChamberMoves @FarmBureau @AAANews

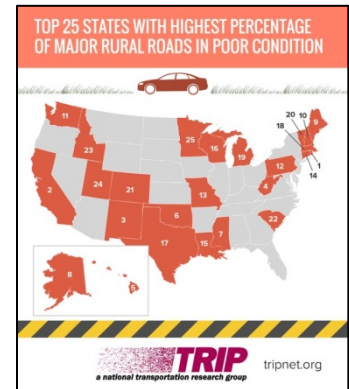
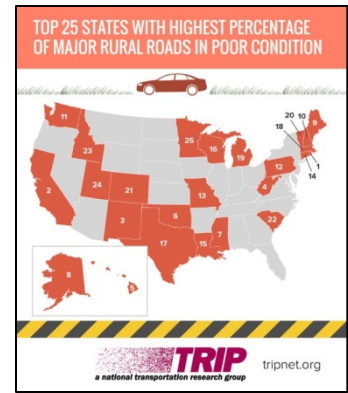


[David Ward](#) Retweeted  
Tweet you were mentioned in  
Today,  
@TRIP\_Inc

released a report that studied the condition of America's rural roads. 15 percent of #RuralRoads are rated in poor condition. We need #InfrastructureNow to fix these and other deteriorating roads across the U.S. (link: [http://www.tripnet.org/docs/Rural\\_Roads\\_TRIP\\_Report\\_May\\_2019.pdf](http://www.tripnet.org/docs/Rural_Roads_TRIP_Report_May_2019.pdf)) tripnet.org/docs/Rural\_Roa...



[Adam B. Jones](#) Retweeted a Tweet you were mentioned in  
New @TRIP\_Inc report ranks SC #1 in rural road fatalities based on 2017 data. This headline serves as a great reminder as to why #ruralroads safety is a key component of the state's long term plan to #fixscroads. Better roads save



lives! (link:  
[http://www.tripnet.org/docs/Rural\\_Roads\\_SC\\_TRIP\\_Release\\_05-22-2019.php](http://www.tripnet.org/docs/Rural_Roads_SC_TRIP_Release_05-22-2019.php))  
tripnet.org/docs/Rural\_Roa... (link:  
<https://twitter.com/scroads/status/1131206114878656512/photo/1>) pic.twitter.com/XLBOKokC3O



[ChamberMoves](#) liked your Tweet  
@TRIP\_Inc report says nine percent of America's rural bridges are rated as poor/structurally deficient (link: <http://ow.ly/tRrY30oMx2S>)  
[ow.ly/tRrY30oMx2S](http://ow.ly/tRrY30oMx2S) #RuralRoads  
#InfrastructureNow #rebuildrural @ChamberMoves @FarmBureau @AAANews



Fix SC Roads @scroads [May 22](#) New  
@TRIP\_Inc report ranks SC #1 in rural road fatalities based on 2017 data. This headline serves as a great reminder as to why [#ruralroads](#) safety is a key component of the state's long term plan to [#fixscroads](#). Better roads save lives! (link: [http://www.tripnet.org/docs/Rural\\_Roads\\_SC\\_TRIP\\_Release\\_05-22-2019.php](http://www.tripnet.org/docs/Rural_Roads_SC_TRIP_Release_05-22-2019.php))  
[tripnet.org/docs/Rural\\_Roa...](http://tripnet.org/docs/Rural_Roa...)

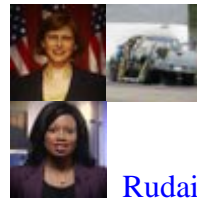


David Anderson [May 22](#) Please examine Warren County Indiana's country roads. If so, a highlight in RED would be appropriate. Low population and only a farm economy results in too little highway funds, unfair gas tax distribution, and apathy by our elected representatives IMO.  
Quote Tweet  
TRIP @TRIP\_Inc · May 22  
America's rural roads have significant deficiencies according to new @TRIP\_Inc report (link: <http://ow.ly/XEAm30oMwXw>)  
[ow.ly/XEAm30oMwXw](http://ow.ly/XEAm30oMwXw) #RuralRoads

#InfrastructureNow #rebuildrural @ChamberMoves @FarmBureau @AAANews



[ASCE Gov't Relations](#) Retweeted your Tweet Michigan has some of the worst rural roads & bridges in the country, report finds (link: <https://www.wxyz.com/getting-around-metro-detroit/michigan-has-some-of-the-worst-rural-roads-bridges-in-the-country-report-finds>)  
[wxyz.com/getting-around...](https://www.wxyz.com/getting-around...) #RuralRoads  
#InfrastructureNow #rebuildrural @ChamberMoves @FarmBureau @AAANews @MICountyRoads



[Rudaina Hamade](#) and 3 others liked your Tweet America's rural roads have significant deficiencies according to new @TRIP\_Inc report (link: <http://ow.ly/XEAm30oMwXw>)  
[ow.ly/XEAm30oMwXw](http://ow.ly/XEAm30oMwXw) #RuralRoads  
#InfrastructureNow #rebuildrural @ChamberMoves @FarmBureau @AAANews (link: [https://twitter.com/TRIP\\_Inc/status/1131062239920836608/photo/1](https://twitter.com/TRIP_Inc/status/1131062239920836608/photo/1)) pic.twitter.com/jxd7I0RRca



[Hilary Powell](#) liked your Tweet New report from @TRIP\_Inc that shows condition of America's rural roads & bridges and rural traffic fatalities nationally and state-by-state to be released May 22 at 1:00 a.m. EDT #RuralRoads  
#InfrastructureNow @ChamberMoves @FarmBureau @AAANews (link: [https://twitter.com/TRIP\\_Inc/status/1130837918283653120/photo/1](https://twitter.com/TRIP_Inc/status/1130837918283653120/photo/1)) pic.twitter.com/QTTkB7sE6U

 Follow @TRIP\_Inc on Twitter 